

PIONIX-M[®]

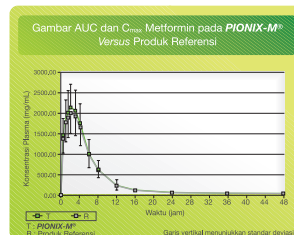
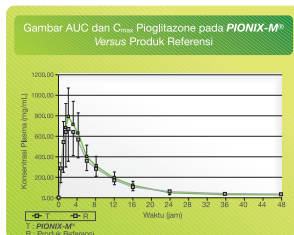
Pioglitazone HCl + Metformin

Synergy for Aggressive Control

HbA_{1c} ≤ 7%

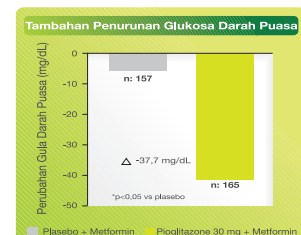
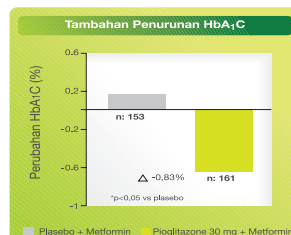


Uji Bioekuivalensi PIONIX-M[®] Versus Produk Referensi¹⁾

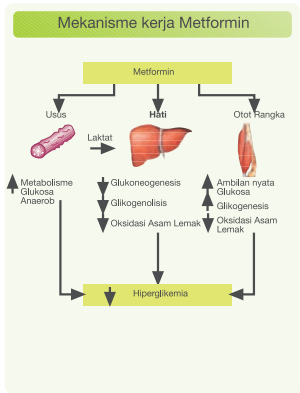
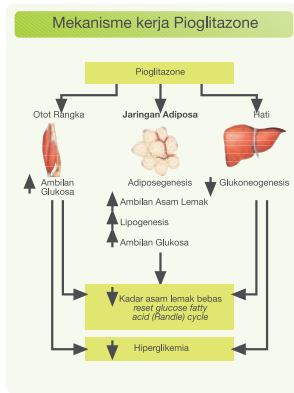


*AUC dan C_{max} PIONIX-M[®] versus produk referensi tidak berbeda bermakna (P>0,05)

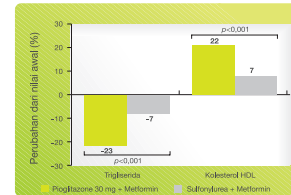
Kombinasi Pioglitazone dan Metformin dalam PIONIX-M[®] Memperbaiki Kontrol Gula Darah Secara Signifikan³⁾



Pioglitazone dan Metformin memiliki mekanisme kerja yang berbeda sebagai *insulin sensitizer*, sehingga sinergi antara Pioglitazone dan Metformin dalam PIONIX-M[®] dapat menghasilkan kontrol gula darah yang lebih agresif²⁾



Kombinasi Pioglitazone dan Metformin Dalam PIONIX-M[®] Secara Bermakna Memperbaiki Profil Lipid Melalui Penurunan Kadar Trigliserida dan Peningkatan Kolesterol HDL dibandingkan Kombinasi Sulfonylurea dan Metformin⁴⁾



	mmol/L		mmol/L	
	Pioglitazone	Gliclazide	Pioglitazone	Gliclazide
Nilai Awal	2,96	2,75	1,10	1,09
Minggu ke-104	2,16	2,59	1,35	1,17
95%CI	-0,73	-0,35	0,13	0,20
Nilai p	<0,001		<0,001	

Referensi:

1. A,Setiawati, M Christine, K.H Santoso, S.Setiawan, R. Widhyastuti. Bioequivalence study of amazone IR tablet produced by PT dankos farma in comparison with actoplus met tablet produced takeda pharmaceutical, co.ltd,japan. Bioequivalence study report;2008:1-31
2. Campbell IW. The role of metformin and pioglitazone in early combination treatment of type 2 diabetes mellitus. British Journal of Diabetes and Vascular Disease. 2006;6(5):207-215.
3. Einhorn D, Rendell M, Rosenzweid J, Egan JW, Mathise AL, Schneider RL. Pioglitazone hydrochloride in combination with metformin in the treatment of type 2 diabetes mellitus: A Randomized, Placebo-Controlled Study. Clinical therapeutics 2000; 22: 1395-1409
4. Charbonnel B, Scherthner G, Brunetti P et al. Long-term efficacy and tolerability of add-on pioglitazone therapy to failing monotherapy compared with addition of gliclazide or metformin in patients with type 2 diabetes. Diabetologia 2005;48:1093-104.

Marketing Office
PT. KALBE FARMA Tbk, Gedung Kalbe, Jl. Letjen Suprpto, Jakarta 10510. PO Box 3105 JAK, Jakarta - Indonesia
 Telp.: (021) 428 73888 - 89, Fax.: (021) 428 73680

www.kalbe.co.id

