

Just like falling leaves...



CPG®

Clopidogrel

Care, Protection, Good efficacy

Current evidence of oral antiplatelet (Clopidogrel) treatment in patients with :

Cerebrovascular Disease

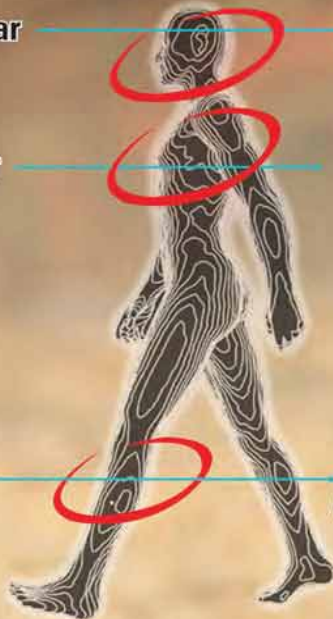
Stroke, TIA^(1,3)
(30, 619 patients)

Cardiovascular Disease

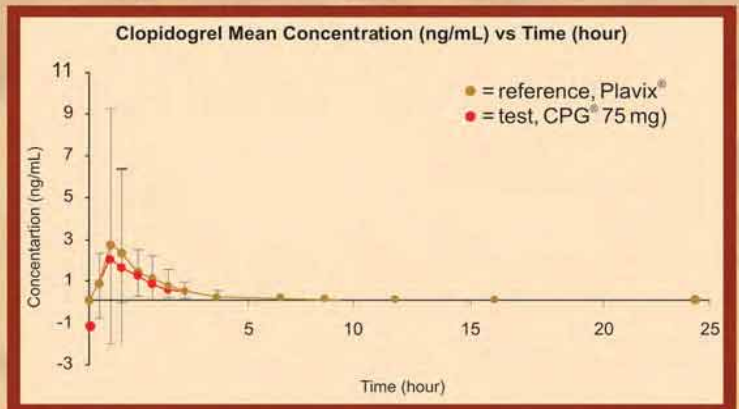
MI, Unstable angina, ACS⁽²⁾
(59,821 patients)

Peripheral Artery Disease

PAOD
(9,214 patients)



The Comparative Bioequivalence Study of CPG[®]⁽⁴⁾



Conclusion :

CPG[®] was equivalent compared to reference product.

Referensi :

1. A randomized, blinded, trial of clopidogrel versus aspirin in patients at risk of ischaemic events (CAPRIE). *Lancet* 1996; 348: 1329-39.
2. Effect of Clopidogrel In Addition to Aspirin in Patients with Coronary Syndromes Without ST-Segment Elevation, *N Engl J Med* 2001; 345: 495-502.
3. Aspirin and Clopidogrel compared with Clopidogrel alone after recent Ischaemic stroke or transient ischaemic attack in high risk patients (MATCH). *Lancet* 2004; 364: 331-7.
4. Kalbe BE Clopidogrel Study Report - Data On File.

For Further Information :
PT. KALBE FARMA Tbk
 KALBE Building
 Jl. Let. Jend. Suprpto Kav. 4, Jakarta 10510
 Telp. : (021) 42873888 - 89, Fax. : (021) 42873680
www.kalbe.co.id/cpg

